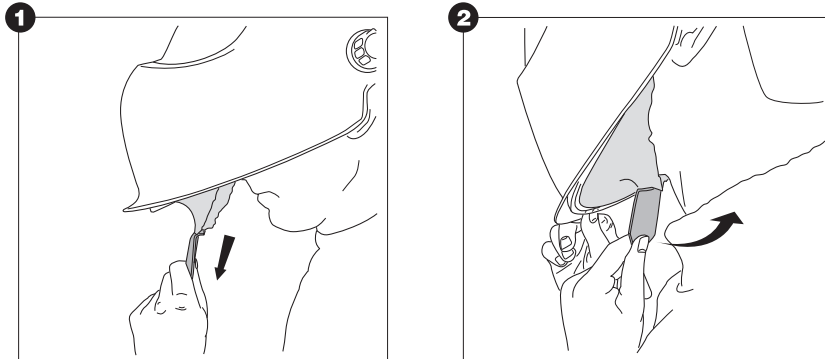
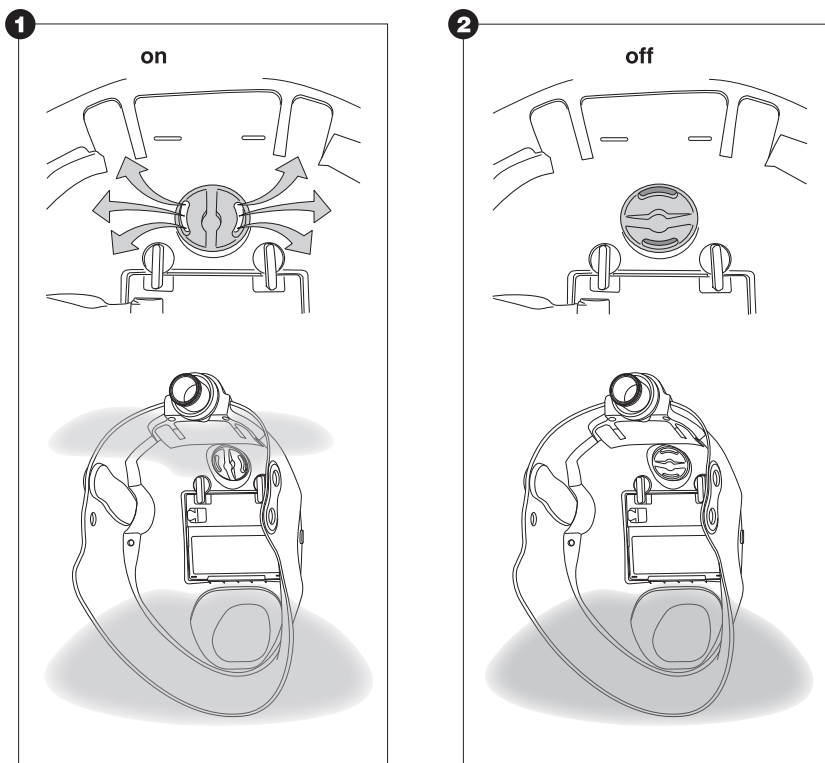


Positioning of the head and face seal e600 series & OSE



Air distribution control e600 series & OSE



Art. No. 9610.429.04

Welding helmet e600 series & OSE for use with respiratory protective equipment



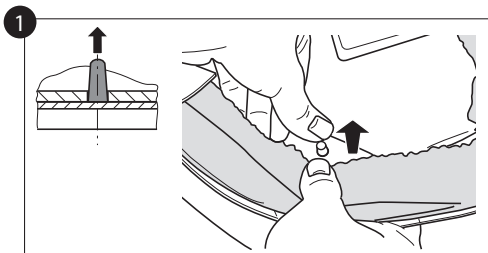
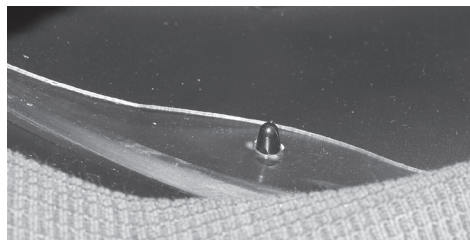
DE Bedienungsanleitung
GB User Instructions
FR Notice d'utilisation
IT Istruzioni per l'uso
ES Instrucciones para el usuario
PT Manual de instruções
NL Gebruiksaanwijzing
CZ Návod k použití
DK Brugervejledning
SE Bruksanvisning
FI Käyttöohje
RU РУКОВОДСТВО ПО ЭКСПЛУАТАЦИИ



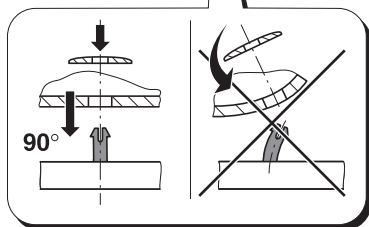
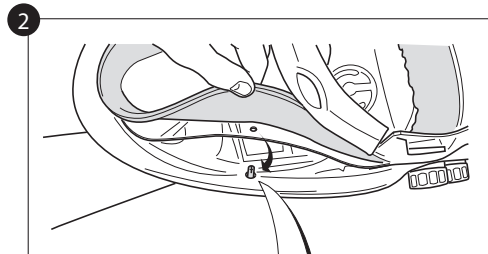
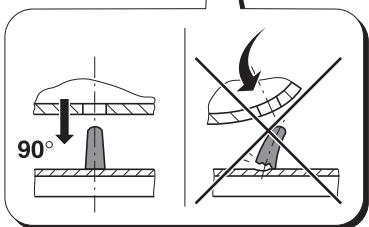
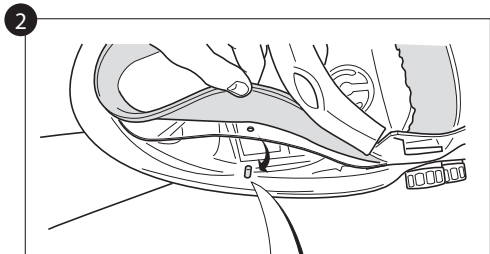
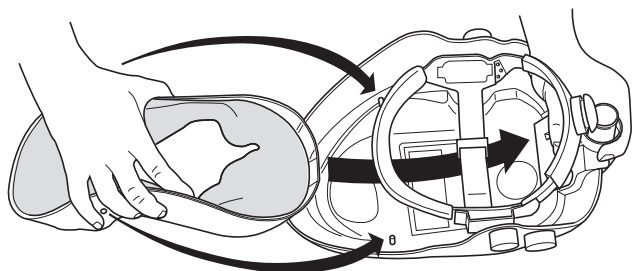
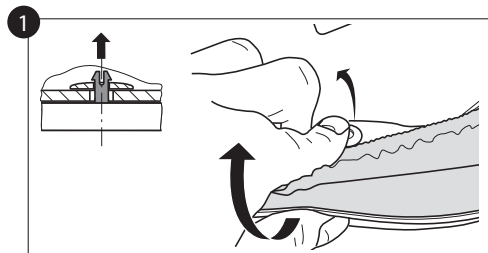
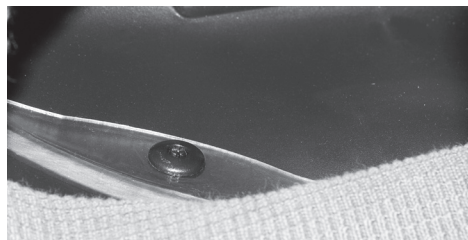
optrel ag
industriestrasse 2
ch - 9630 wattwil
phone: ++41 (0)71 987 42 00
fax: ++41 (0)71 987 42 99
info@optrel.com
www.optrel.com

Optrel e600 series & OSE face seal removal

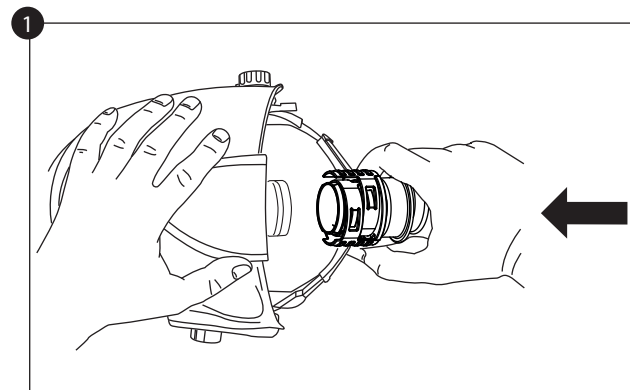
< 2007



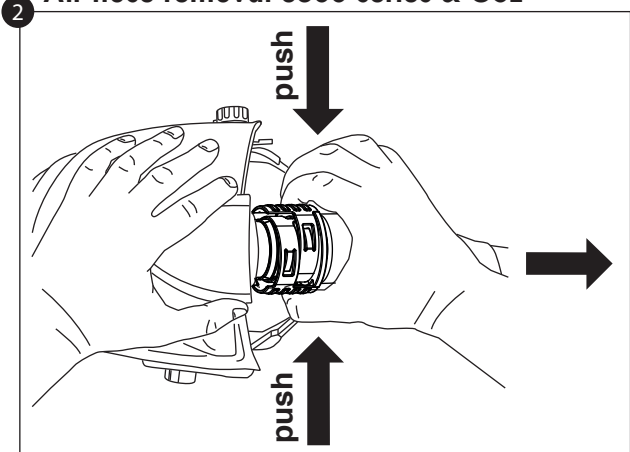
> 2007



Air hose assembly e600 series & OSE



Air hose removal e600 series & OSE



Air hose holder

